

***Introducing the Most Versatile Box in the
Industry***
Kundel's Vpanel



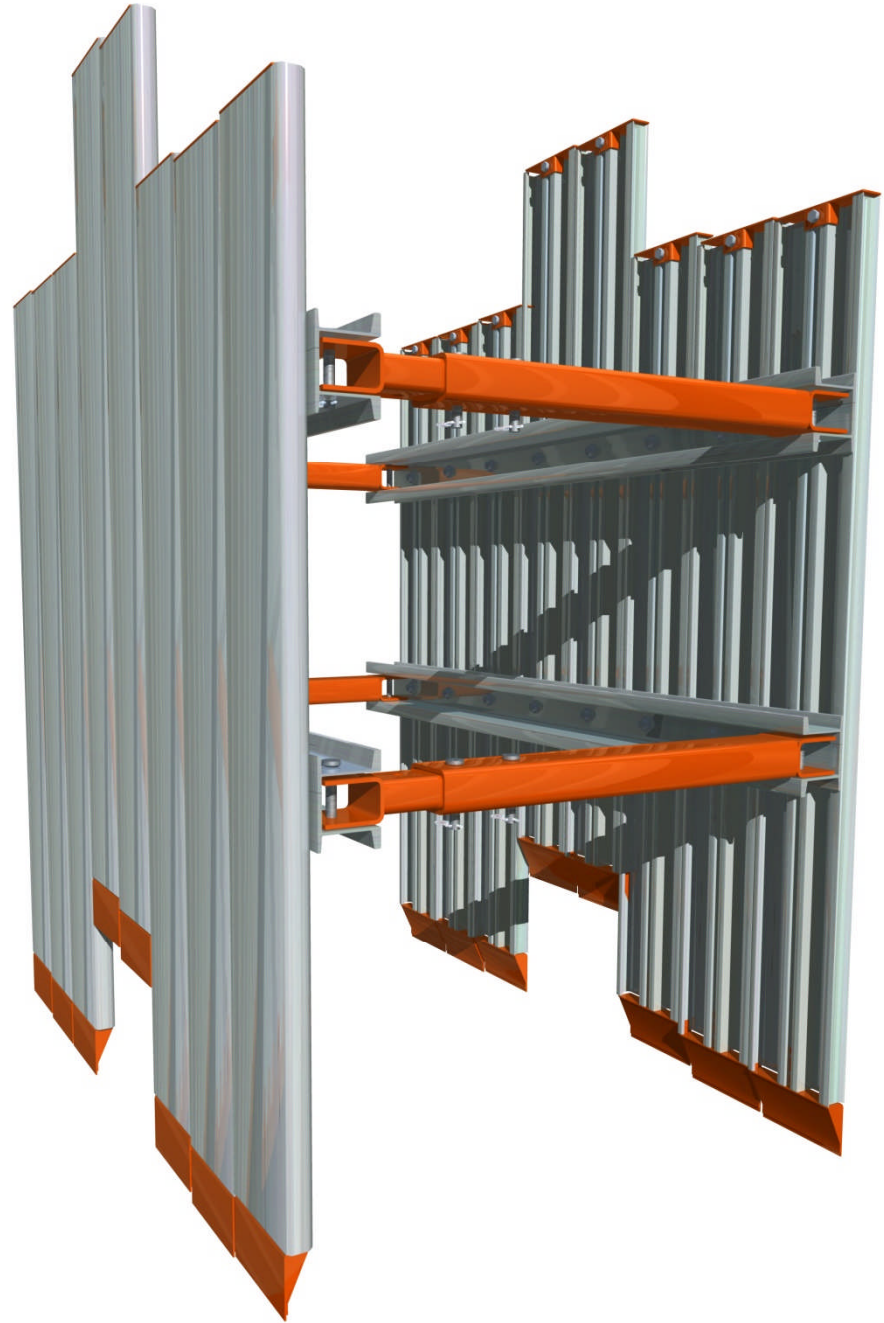
Kundel
Industries Inc.

You have spoken and expressed your concerns about excavating around existing utilities; **Kundel** has listened.

*****Kundel** has designed a box just for you! We based our design using first hand knowledge; experiencing the trials and tribulations encountered in the field.***

That is why the features and benefits of the Vpanel truly make this box one of a kind.

*****Kundel** is the only manufacturer in the industry that produces a box of this caliber. This box is capable of being totally adjusted to fit the unknowns of underground utility work.***



Features such as our Aluminum walers which reinforce and support the vertical members to make this system extremely strong and durable. In fact the Vpanel system is designed to be a double support system, both vertically and horizontally.

Each panel can be independently moved vertically. Making it easier to get around multiple laterals and obstructions. Panels can also be removed completely and replaced as needed.

No longer will you have to hold the box above utilities, now you can easily loosen, lift, and set the panels to accommodate your needs while still allowing the box to rest firmly in the bottom of your trench.

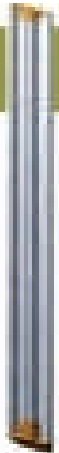
Horizontal Frame

Aluminum wales combined with steel telescope end beams gives you variable width adjustment.



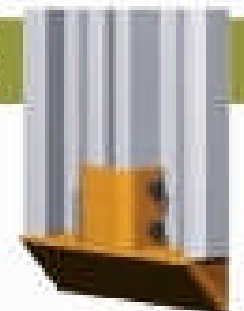
V-Panel

Light weight durable extruded aluminum panels with a steel knife edge at the bottom and a steel tamping block at the top. The clamping design allows for vertical movement of the panel in the trench.



Knife Edge

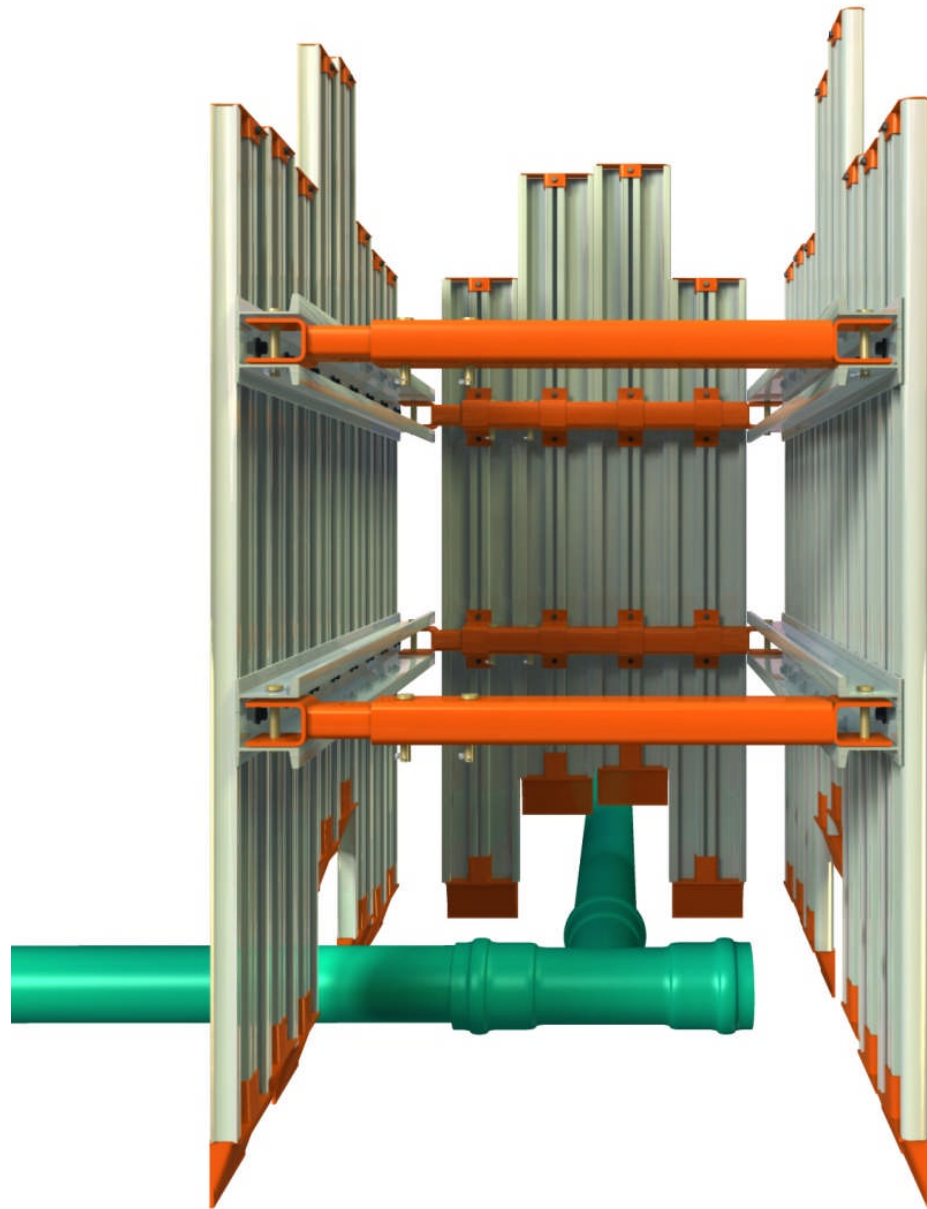
The all steel knife edge allows you to cut smoothly into the soil, making driving the panels easy.



The Vpanel end wall kits are also a one of a kind accessory. They too are adjustable and available in various sizes. The size you have chosen for your telescoping beams will dictate the size of your end wall kit.

End wall kits are a fantastic addition to any Vpanel system and really adds to the versatility of this system.

These kits can be added to any Vpanel system at anytime. We can even modify the Vpanel end wall kits to work with our lightweight steel boxes too.





The Vpanel can also be fitted with Hydraulic Cylinders.

Kundel is the ONLY Manufacturer to date with PE Certified adjustable waler heights. This allows you to adjust your Vpanel to accommodate larger pipe. For example; even in the worst C soil conditions with your pipe clearance set to 48", you will still have 12ft of depth rating.

Kundel has made the Vpanel stackable as well; adding to the many benefits of owning this system.

NOTE: the adjacent Certification sheet and tabulated data is for a 6' X 8' Vpanel.

CERTIFICATION SHEET

Engineer's Statement : This certifies that the V-Panel System has been designed in accordance with the requirements and guidelines promulgated by the occupational safety and health administrations rules and regulations for construction standards for excavations (29) part 1926.650-.652 subpart P.

Michael J. Venetta, P.E.
Ohio Registration # E-46015

Henry Venetta, P.E.
Ohio Registration # E-25091



Manufacturer's Statement: Kundel Industries Inc. hereby certifies that all materials and processes involved in the manufacture of each and every V-Panel System strictly and stringently follow every material, production and design specification put forth by Venetta Engineering to ensure that each and every V-Panel System is in full accordance with the requirements and guidelines promulgated by the Occupational Safety and Health Administration.

Robert Kundel, President
Kundel Industries, Inc.

SERIAL NUMBER			15518		
Pressure Ratings & Allowable Loads					
Model	CLR (IN)	Allowable Pressure (PSF)	Depth Rating (Ft.)		
			A	B	C
VP-6X8-K	12	1320	50	29	22
VP-6X8-K	18	1320	50	29	22
VP-6X8-K	24	1320	50	29	22
VP-6X8-K	30	1320	50	29	22
VP-6X8-K	36	1080	43	29	18
VP-6X8-K	42	900	34	20	15
VP-6X8-K	48	660	29	17	12
NOTE:					
CLR = CLEARENCE FROM BOTTOM OF KNIFE EDGE ADAPTER TO UNDER SIDE OF WALER (UNITS INCHES)					
Maximum Allowable Strut Load			18,000 Lbs.		

Kundel Industries
PO BOX 1685
Austintown, Ohio 44515
Phone : (330) 259-8009 Fax : (330) 259-8801

Kundel
INDUSTRIES

We can even change the dimensions of this box with minimal cost.

Take a little time and look into the future, then ask yourself what's the biggest box you'll need to have on hand on a regular basis? To affectively optimize your total expenditures and get the biggest bang for your buck, get the longest box possible to start with.

For Example, let's take a look at an 8'x12' Vpanel. Most likely, you will not have to close the end of this box off very often, but you may need to have a smaller box to go out to make new connections, repairs, and general maintenance.

Instead of buying another box for those jobs, cut cost by just ordering a set (or 2) of 6' whalers to compliment your system. You already have plenty of panels to make this box 8'x6' and you will only need to get the end wall kit panel adapters to close your ends off.

Utilize your new Vpanel 8'x12' system to custom fit it to the work you do most often. Maximize it's potential by applying different sizes of whalers and spreader beams. This will allow you to:

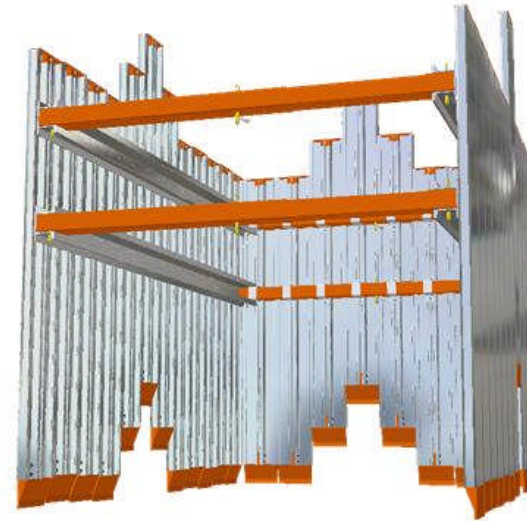
Have a lightweight versatile 8x12 for larger excavations.

Make a 8'x6'x6' manhole box for 5' manholes by utilizing 2 sets of 6' whalers, or 1 set of 6' whalers and 1 set of 52"-88" telescoping beam spreaders. Either way you'll have an adjustable 8' tall 6'x6' manhole box.

Remove the end wall kit from one side to make a small pit box for boring.

Tren Shore V Panel Box And Shoring System

A trench box that is easy to lift and move around on the job site. Use the versatility of the movable Shore panels to work around existing utilities and "T" off from your Main trench in safety. Protect your workers at each end of the box with the variable Width. Move the box to the job site in a pick up truck.



- Variable width
- Variable height
- Variable length
- All aluminum
- Steel knife
- Steel tamping
- Sliding clamped panels

Side wall set Dimensions and weight

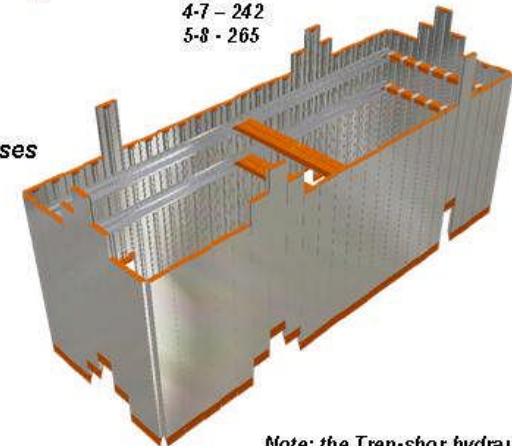
6x6 - 712	8x6 - 882
6x8 - 952	8x8 - 1,175
6x10 - 1,186	8x10 - 1,472
6x12 - 1,425	8x12 - 1,762

Adjustable spreader beams

Set of 4 - weight
2-3 - 117
3-5 - 218
4-7 - 242
5-8 - 265

Man hole, Junction Chambers
Catch Basins, Fire Hydrants, Crosses

As a shoring system the Tren Shore equipment stops Ground movement protecting Adjacent structures. Drive the Panels as you excavate. Put Pressure on the side walls of the Trench to hold back any ground Movement.

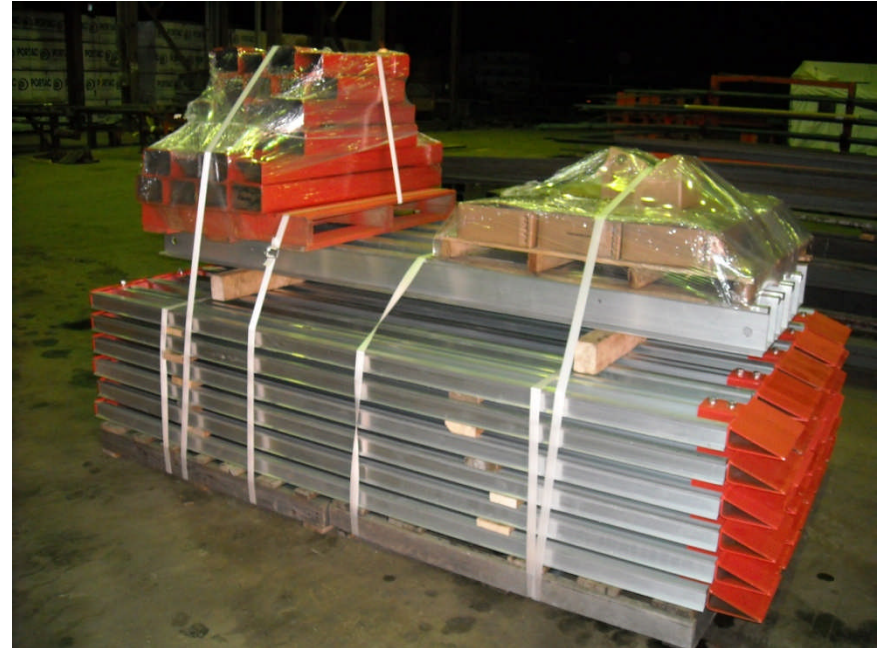


Note: the Tren-shor hydraulic cylinders are optional

Kundel Warren, Ohio 330-395-3948

Since this is a modular system, it can be torn completely down and transported in a dump truck, box truck or on a trailer to your job site.

Of course it is very cost effective for the initial delivery as well. It could save thousands in freight alone over the years. No more outrageous delivery charges, because this box can always go enclosed freight.



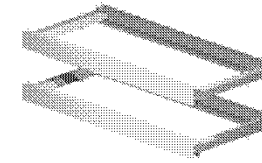
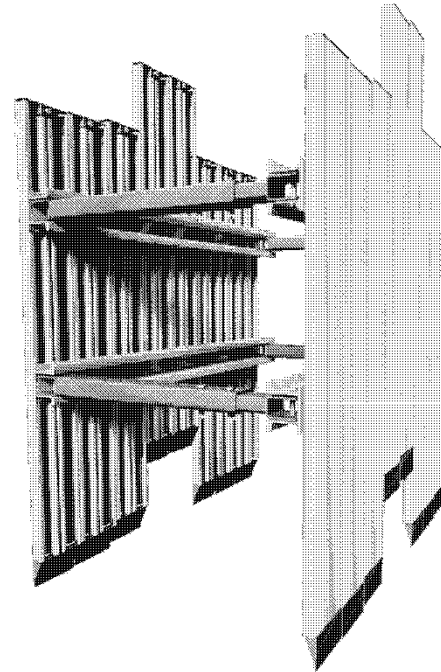
Kundel's Vpanel is the box of the future for anyone dealing with maintenance and existing utilities.

The possibilities are endless! As you can see by the adjacent chart, we can customize this box specifically for you by matching this system to your machine to ensure we cover all of your needs.

A Kundel representative will be more than happy to sit down and discuss any of your questions or concerns, then custom design a system specifically for you.

Modular Trench Safety Equipment

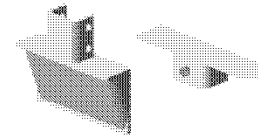
V-Panel Box



Steel Horizontal Walers with an internal locking design. Steel Spreader Beams and Adjusters sold separately.

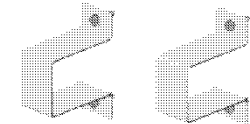


The Only Aluminum Extruded panel in the industry with the on the fly independent Vertical adjustment. Easily adjust your panel up and down without pulling out your box when encountering crossing utilities.



Each Panel come with attachable/detachable Knife Edge and Tamping Pad. Both are used to make driving panel in the ground almost effortless.

End Brackets can be quickly attached to the Square Steel Spreader and a vertical panel then attached to close off one end of the trench.



Note: V-Panel system must be completely assembled before use.

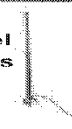


V-Panel Box

(Spreader not included)



Adjustable Steel Spreader Beams



Hydraulic Adjuster

(Optional)

mfg no.	size	wgt.	"A"	"B"	"C"
562956	6' X 6'	841	67	38	29
562958	6' X 8'	1118	50	29	22
562959	6' X 10'	1396	38	22	17
562960	6' X 12'	1673	28	17	13
562961	8' X 6'	1040	61	35	27
562963	8' X 8'	1332	44	26	20
562964	8' X 10'	1630	31	19	15
562965	8' X 12'	1950	24	15	12
562966	10' X 6'	1280	66	38	29
562968	10' X 8'	1703	49	29	23
562969	10' X 10'	2129	35	22	18
562089	10' X 12'	2552	28	17	14
562971	12' X 6'	1448	62	36	28
562973	12' X 8'	1927	45	27	21
562974	12' X 10'	2409	31	21	17
561975	12' X 12'	2888	26	17	14

Side Wall Set		Wgt
562120	17" / 27"	50
562121	22" / 36"	58
562122	25" / 42"	80
562123	34" / 56"	84
562124	40" / 64"	92
562125	52" / 88"	115

Side Wall Set	Wgt.
562120	17" / 27" 50
562121	22" / 36" 58
562122	25" / 42" 80
562123	34" / 56" 84
562124	40" / 64" 92
562125	52" / 88" 115

V-Panel Aluminium Accessories

Individual V-Panels - Available in 5' to 12' Planks

Waler Systems - Available in 6' to 16' systems

Call about our complete list of tools parts and accessories.

Spreader Sold Separately

Kundel
INDUSTRIES
www.kundel.com

*ALL INFORMATION SUBJECT TO CHANGE WITHOUT NOTICE.

April 2007 Kundel Ind., Inc. P.O. Box 4686 Austintown, OH 44515 Ph 330.259.9009 Fax 330.259.9008