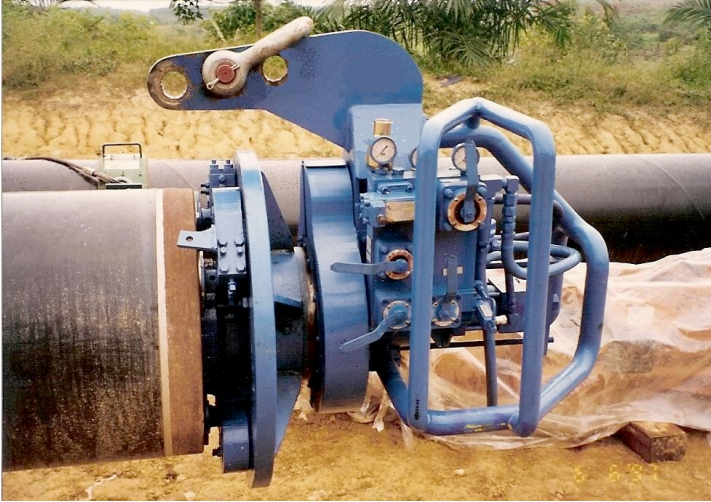


Welding Equipment

Pipe Facing Machine



FEATURES—Challenger Services Pipe Facing Machine

- Two sets of hydraulically operated clamping shoes which simultaneously expand with equal pressure to secure the pipe for the beveling process.
- Hydraulically operated rotating faceplate which secures up to six radial arms, which contain carbide tip cutting tools.
- The cutting tools may be set to a variety of ranges.
- One skilled operator may produce a useable bevel in approximately 3 to 5 minutes depending on the wall thickness of the joint of pipe.

SPECIFICATIONS

SIZE INCHES	WIDTH IN/CM	HEIGHT IN/CM	LENGTH IN/CM	WEIGHT LB/KG	CUBE FT ³ /M ³
4 TO 10	34 / .86	37 / .94	56 / 1.42	1120 / 508	41 / 1.16
8 TO 14	34 / .86	37 / .94	65 / 1.65	1300 / 590	47 / 1.34
16 TO 22	40 / 1.02	43 / 1.09	81 / 2.06	1850 / 839	81 / 2.28
24 TO 26	40 / 1.02	47 / 1.19	90 / 2.29	2300 / 1043	98 / 2.77
28 TO 32	41 / 1.04	52 / 1.32	100 / 2.54	3200 / 1451	123 / 3.49
34 TO 38	44 / 1.12	58 / 1.47	103 / 2.62	3800 / 1723	152 / 4.31
40 TO 44	53 / 1.37	77 / 1.96	116 / 2.95	5400 / 2449	274 / 7.76
46 TO 48	54 / 1.37	77 / 1.96	129 / 3.28	6500 / 2948	310 / 8.79
50 TO 60	68 / 1.73	87 / 2.21	140 / 3.56	8800 / 3991	479 / 13.57
48" Miter	55 / 1.4	77 / 1.96	112 / 2.84	6100 / 2766	274 / 7.76
56" Miter	76 / 1.93	87 / 2.21	112 / 2.84	8400 / 3810	429 / 12.14