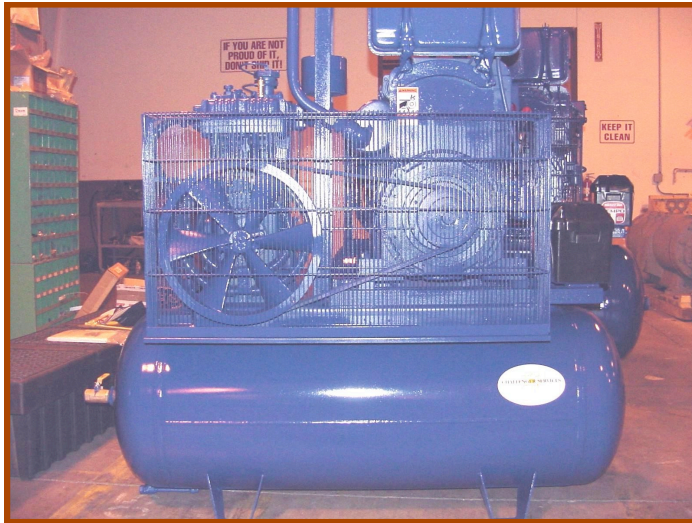




Portable Air Compressor

Challenger Model PC-350



For operating pneumatic pipe bending mandrels and internal line up clamps.

Standard Components

- **Duetz Model F2L1011 Diesel Engine**
Air cooled/four cycle
20 h.p. @ 2650 rpm
Electric Start
Auto Idle Down
- **Quincy Model 350 Compressor**
Two stage
225 psi
36.6 cfm @ 940 rpm
- **Air Tank**
120 gallon capacity
250 psi
- **Lifting Bale**
- **Pressure Relief Valve**

Dimensions

Length	80 inches (2,032 m)
Width	38 inches (965 m)
Height	78 inches (1,981 m)
Cubic Volume	175 cu. ft. (4.93 cu. meters)
Weight (shipping)	2,430 lbs. (1,981 Kg)
Shipping data includes crating	

Options

- Hatz Diesel Engine**
- Lister Diesel Engine**
- Quincy Model 390 Compressor**
Two stage—200 psi—92 cfm @ 900 rpm
- Wisconsin Gasoline Engine**