
**dimensions**

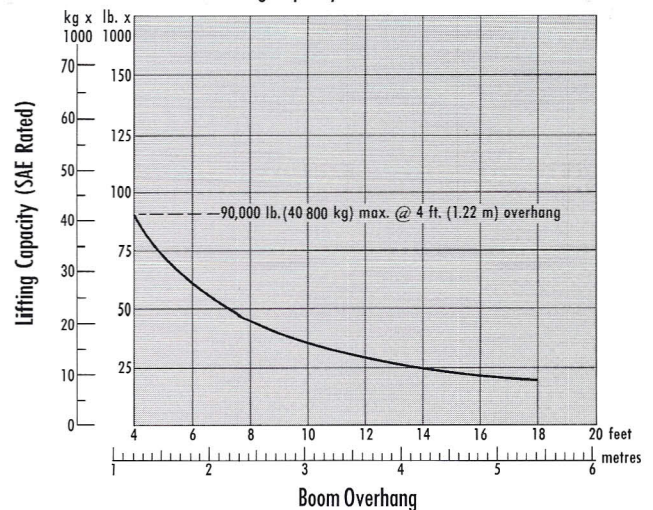
- (A) Minimum shipping width (both side frames removed) .. 9'8" (2950 mm)
- (B) Shipping width (left frame removed) ..... 11'1" (3380 mm)
- (C) Width, weights retracted ..... 11'8" (3560 mm)
- (D) Width, weights extended ..... 16'7" (5050 mm)
- (E) Height, less boom ..... 11' (3350 mm)
- (F) Height to top of counterweights ..... 8'7" (2620 mm)
- Overall length ..... 16'2" (4930 mm)


**service refill capacities**

|  | U.S. Gallons | (litres) |
|--|--------------|----------|
| Fuel tank .....                                  | 115          | (435)    |
| Cooling system .....                             | 12           | (45.4)   |
| Counterweight hydraulic control .....            | 9            | (34.1)   |
| Lubrication system:                              |              |          |
| Crankcase .....                                  | 7.25         | (27.4)   |
| Transmission, steering clutches and brakes ..... | 18.5         | (70)     |
| Final drives (each) .....                        | 9            | (34.1)   |


**weights (approximate)**

|  |                        |
|--|------------------------|
| Chassis only .....                           | 36,500 lb. (16 500 kg) |
| Pipelayer equipment with counterweight ..... | 24,000 lb. (10 900 kg) |
| Total shipping .....                         | 60,500 lb. (27 400 kg) |

**Lifting Capacity 18' (5.49 m) Boom**

**pipelaying equipment**

Counterweights, adjustable, hydraulically controlled:

|   |                      |
|---|----------------------|
| Counterweight and lift frame .....          | 3,560 lb. (1610 kg)  |
| 8 segments at 1,330 lb. (600 kg) each ..... | 10,640 lb. (4830 kg) |
| Total weight extendable .....               | 14,200 lb. (6440 kg) |

**Live power:** Continuous power to pipelayer winches, independent of torque converter.

**Winch transmission:** Constant mesh, built by Caterpillar. 3 speeds for raising, 1 for lowering.

**Drums:** Operated independently or simultaneously.

|  | Load            | Boom            |
|--|-----------------|-----------------|
| Drum diameter .....                    | 10.25" (260 mm) | 10.25" (260 mm) |
| Brake diameter .....                   | 22" (560 mm)    | 22" (560 mm)    |
| Length (inside flanges) .....          | 14" (356 mm)    | 7" (178 mm)     |
| Capacity with .75" (19 mm) cable ..... | 620' (189 m)    | 255' (78 m)     |

Hook speed (bare drum):

|              | FPM   | (m/min) |
|--------------|-------|---------|
| Raise:       |       |         |
| First .....  | 25.0  | (7.6)   |
| Second ..... | 49.7  | (15.1)  |
| Third .....  | 118.8 | (36.2)  |
| Lower .....  | 53.4  | (16.3)  |

Four-part load line; four-part boom line.

**Clutch:** Two-plate, 11.4" (290 mm) diameter, friction, independent of flywheel clutch.

**Brakes:** Interchangeable between boom and load line drums, self-energizing, protected from weather, 22" x 5" (560 x 127 mm).

**Boom:** Welded box section. Length: 18' (5490 mm).

Materials and specifications are subject to change without notice.