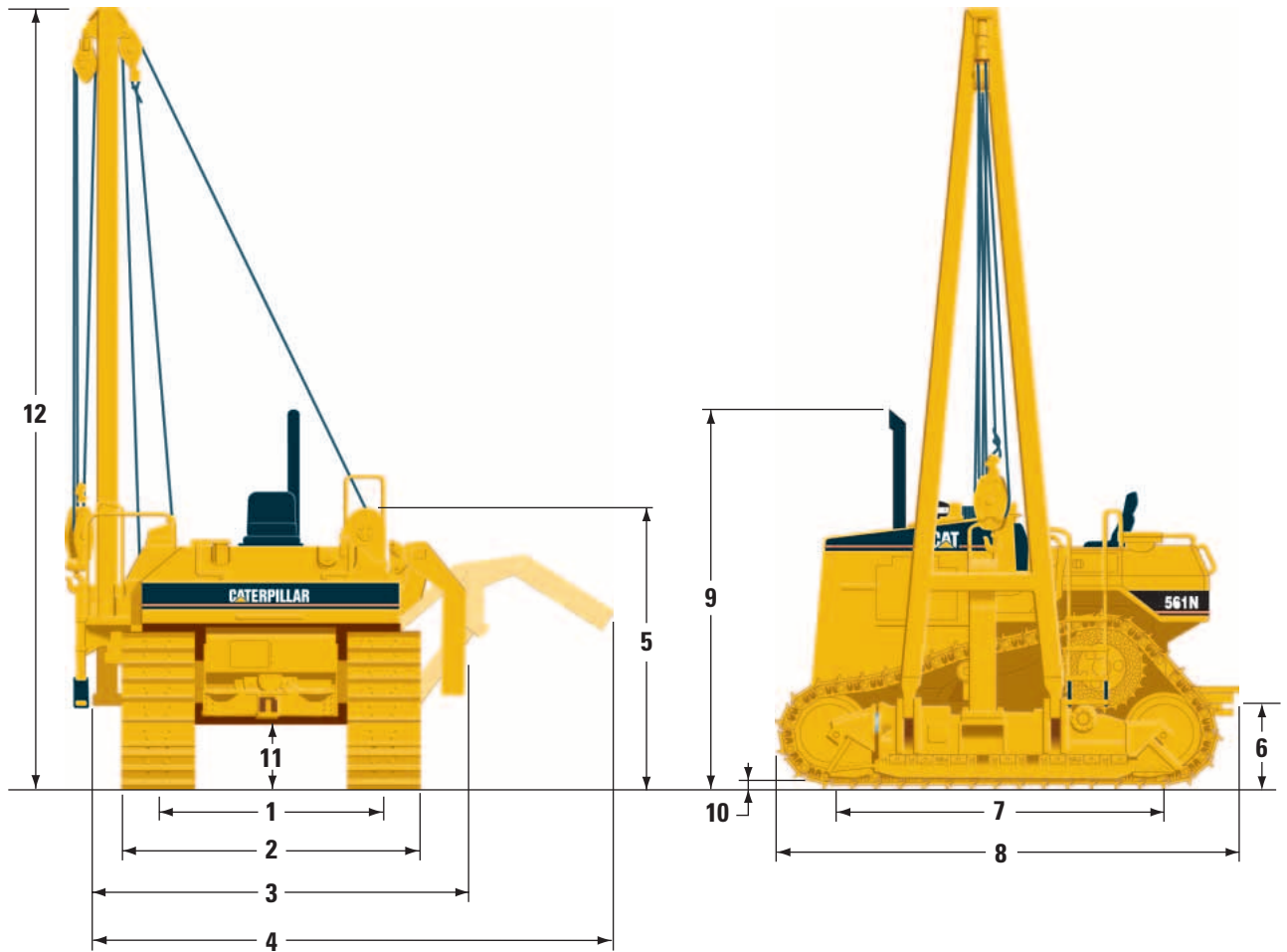


561M Pipelayer

Dimensions

All dimensions are approximate.

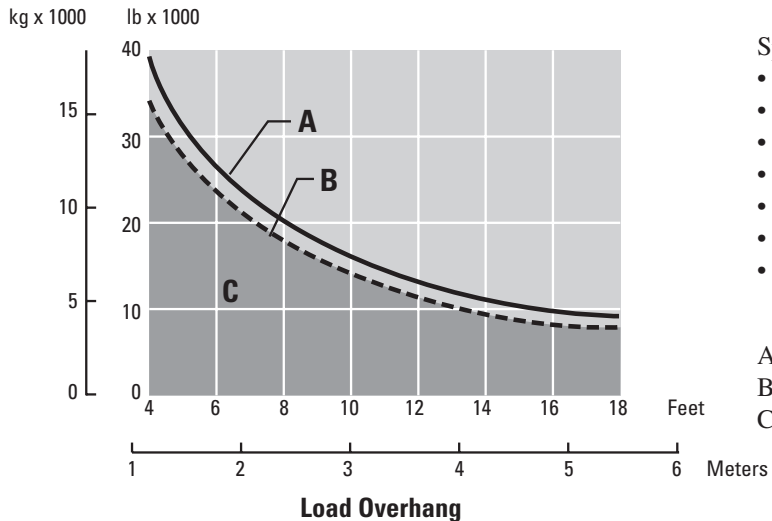


1	Track Gauge	2000 mm	79 in
2	Width of Tractor - Standard Shoes	2560 mm	101 in
3	Width of Tractor - Counterweight/Boom Removed	2983.5 mm	117.5 in
4	Width of Tractor - Counterweight Extended	4463 mm	176 in
5	Machine Height - Tip of Grouser to Top of Winch	2519 mm	99 in
6	Drawbar Height (Center of Clevis)	537.5 mm	21 in

7	Length of Track on Ground	2604 mm	103 in
8	Operating Length (with Drawbar)	3708.5 mm	146 in
9	Height to Top of Stack	3041.4 mm	119 in
10	Grouser Height	47 mm	1.9 in
11	Ground Clearance (SAE J1234)	432.5 mm	17 in
12	Boom Height - Tip of Grouser at SAE 4 ft (1.22 m) Overhang	6361.7 mm	251 in

561M Pipelayer

Lifting Capacity



Specified Equipment

- Diameter wire rope 16 mm 5/8 in
- Minimum breaking strength 18 688 kph 41,200 lb
- 3 part load line
- 3 part boom line
- Counterweight extended 2980 kg 6570 lb
- Standard boom 5.49 m 18 ft
- Total operating weight 16 851 kg 37,150 lb

- A Maximum lift capacity per ISO 8813
- B Rated load capacity per ANSI/ASME B30.14
- C Working range per ANSI/ASME B30.14